



Convenient for patients, Good for business.

- Protect valuable dispensing revenues from local and online competition
- Lock-in patients through unrivalled 24/7 convenient collection
- Cut patient queues and free up valuable staff resources for more profitable services

Options



Payment terminal



Device logo and colours



Fast-loading (single or both sides)

Set up needs

Installation

- 1x power socket minimum (2 recommended as a back-up)
- 1x network point minimum (2 recommended as a back-up)

Software

- Patient Medication Record (PMR) integration.

PMR interface varies according to the country of installation. PMR interface can be developed on demand. UK PMR interface examples:

Pharmacy Manager / ProScript / Positive Solution Ltd / Titan / Pharmacy X

Machines specifications

	PS24 Compact	PS24 Multi
Floor space	Up to 1m ²	Up to 2m ²
# items dispensed per month	< 6000	> 6000
Shape	Straight	Straight or L-Shape
Dimensions WxDxH in mm	880 x 1010 x 1870	Straight shape: 880 x 2220 x 2050 L-Shape: 880 / 2590 x 1250 x 2050
Weight	280Kg	Straight shape: 550Kg L-Shape: 600Kg
Digital colour touch screens	Ventilated 17 inches (patient side) 8 inches (loading side)	Ventilated 24 inches (patient side) 10 inches (loading side)
Electric requirement	110-220V	110-220V
Power consumption	200W	200W

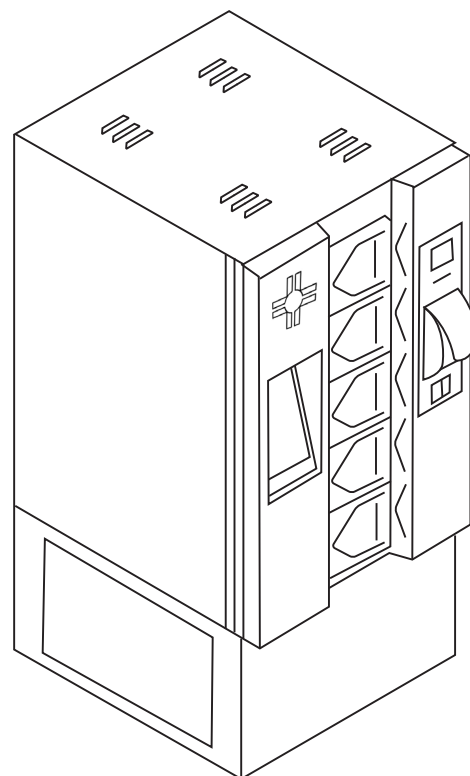
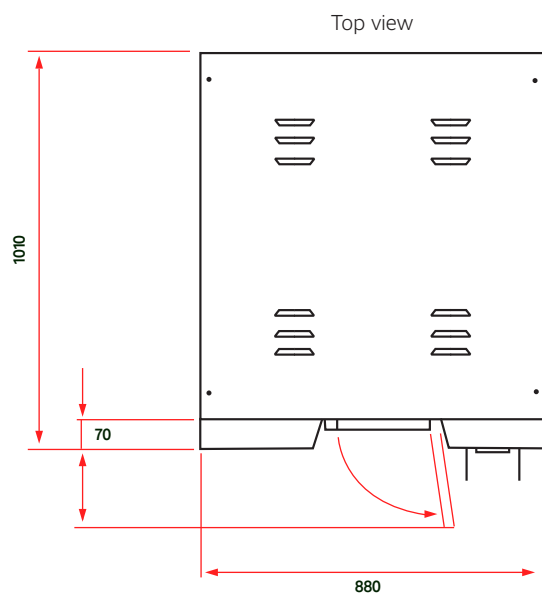
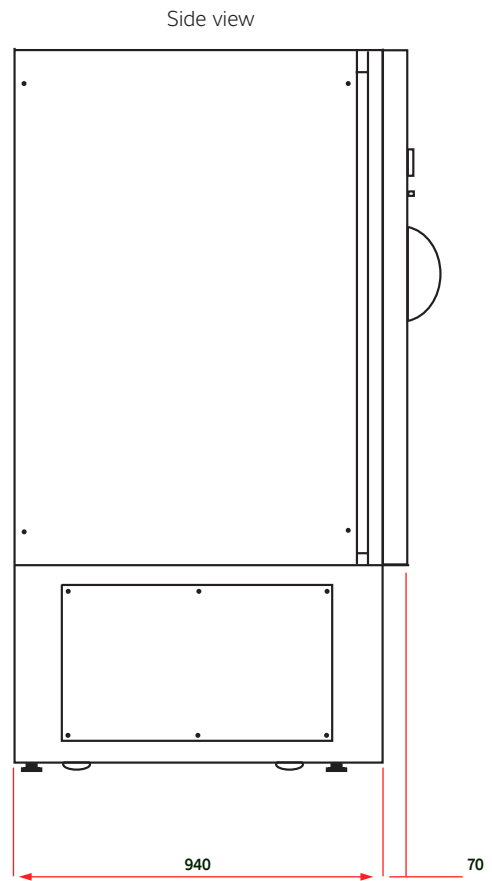
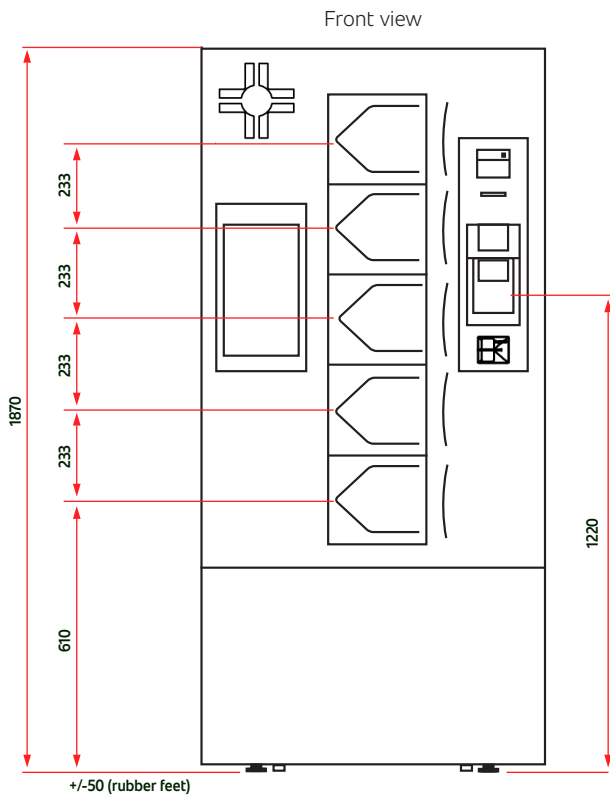
Customisable configuration

	PS24 Compact	PS24 Multi																						
Doors	Can be on any of the three internal sides with right or left opening	Fast loading (Right/Left/Both sides) All doors have locks and keys																						
Access	 <p>Door opening requires 1m of space</p>	<ul style="list-style-type: none"> Rear door requires 1m of space to open fully Fast loading side door (option). Side door access requires 500mm minimum (700mm recommended) 																						
Front panel	Logo and colour options	Can be lowered by 310mm Customised with logo/colours																						
Frame	<p>Standard short frame for shop window installation</p>  <p>Deep frame for install into cavity wall</p> 	<p>Various frame sizes available according to the needs:</p> <ul style="list-style-type: none"> short long deep frame (for cavity wall) frames can be powder coated in matching colours 																						
Storage capacity	<p>Configuration: 100 compartments 100 Medium</p> <p>Configuration: 70 compartments 40 Medium 30 Large</p> <p>Configuration: 50 compartments 50 Large</p> <p>Prescription compartment size</p> <table border="0"> <tr> <td>Large</td> <td>Medium</td> </tr> <tr> <td>a: 232mm</td> <td>a: 118mm</td> </tr> <tr> <td>b: 93mm</td> <td>b: 47mm</td> </tr> <tr> <td>c: 225mm</td> <td>c: 225mm</td> </tr> <tr> <td>d: 200mm</td> <td>d: 200mm</td> </tr> </table> 	Large	Medium	a: 232mm	a: 118mm	b: 93mm	b: 47mm	c: 225mm	c: 225mm	d: 200mm	d: 200mm	<p>Configuration: 178 compartments 110 Small 44 Medium 24 Large</p> <p>Configuration: 150 compartments 110 Small 40 Large</p>  <p>Load by compartment: 1kg max.</p> <p>Prescription compartment size</p> <table border="0"> <tr> <td>Large</td> <td>Medium</td> <td>Small</td> </tr> <tr> <td>250mm wide</td> <td>150mm wide</td> <td>130mm wide</td> </tr> <tr> <td>140mm high</td> <td>100mm high</td> <td>100mm high</td> </tr> <tr> <td>275mm long</td> <td>275mm long</td> <td>175mm long</td> </tr> </table>	Large	Medium	Small	250mm wide	150mm wide	130mm wide	140mm high	100mm high	100mm high	275mm long	275mm long	175mm long
Large	Medium																							
a: 232mm	a: 118mm																							
b: 93mm	b: 47mm																							
c: 225mm	c: 225mm																							
d: 200mm	d: 200mm																							
Large	Medium	Small																						
250mm wide	150mm wide	130mm wide																						
140mm high	100mm high	100mm high																						
275mm long	275mm long	175mm long																						
Colours	White RAL 9002 (standard option) - other colours available as an added option																							

Implementation drawings

PS24 Compact

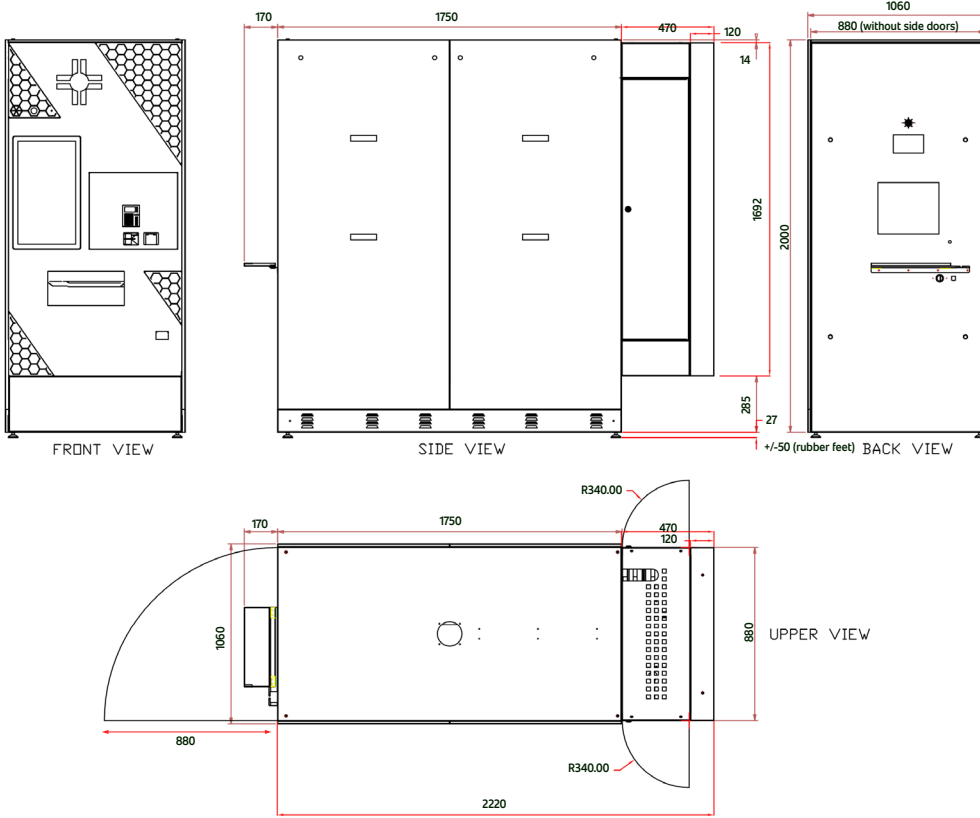
Measurements in mm



Implementation drawings

PS24 Multi

Measurements in mm



L - SHAPE version (Available as right or left hand L-Shape)

